

Bellringer

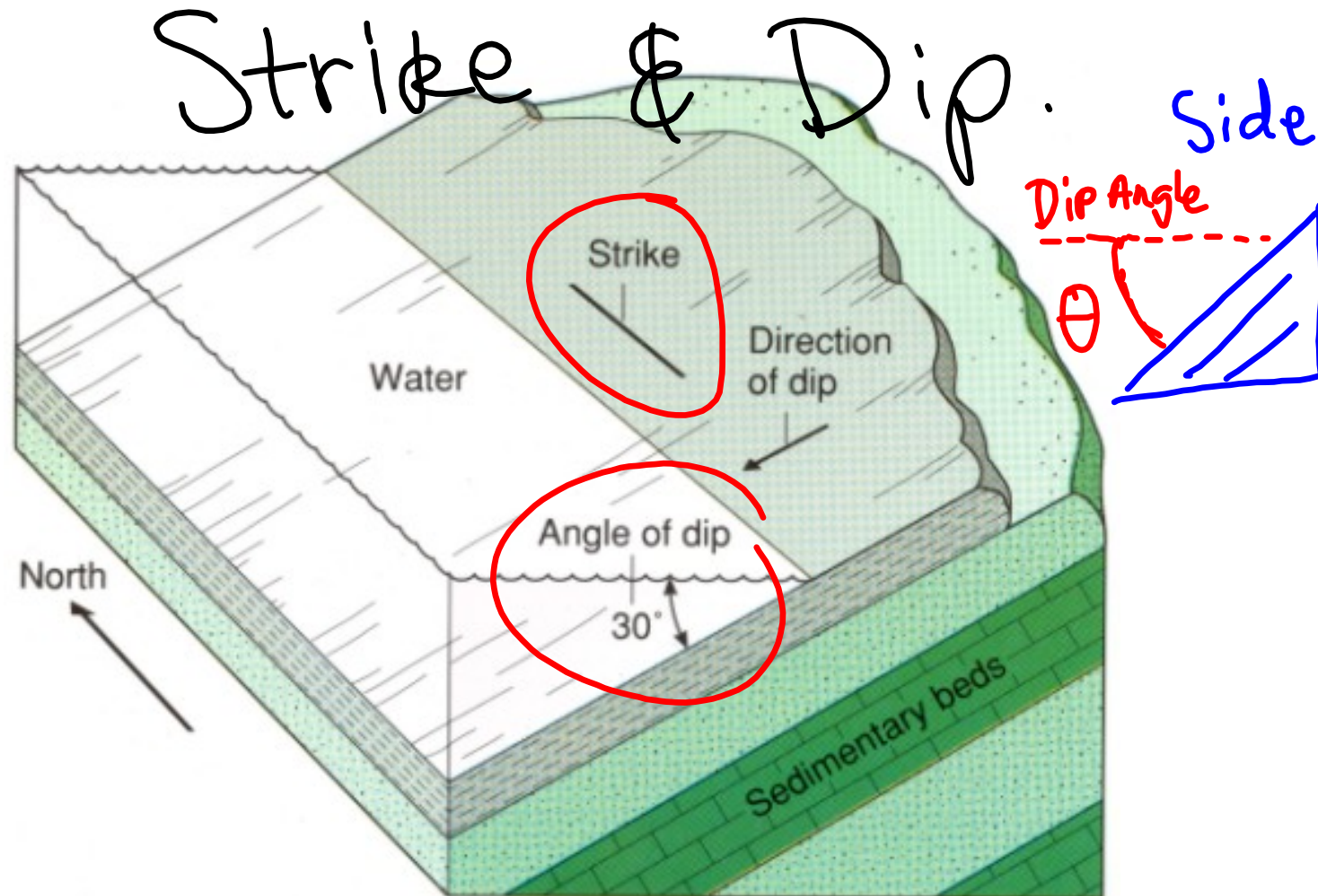
1. What type of stress builds large mountain ranges?
2. What's the difference between an anticline and a syncline?

Learning Objectives:

- I can interpret information to draw and identify the geologic structure.

Check For Understanding

- What's the difference between strike and dip of a geologic structure?



Strike is the compass trend of an imaginary horizontal line on a plane and Dip is the angle at which a layer tilts, relative to horizontal; the angle is measured in an imaginary vertical plane that trends perpendicular to the strike.

Drawing a Cross Section

- Draw your surface line.
- Make marks indicating each layer that is exposed on the surface.
- Reference the dip angle and direction to draw how that layer goes into the ground.
- Use a protractor to draw the correct angle.
- Connect same layers that meet up with each other.
- Infer where layers would have continued before erosion above the surface.

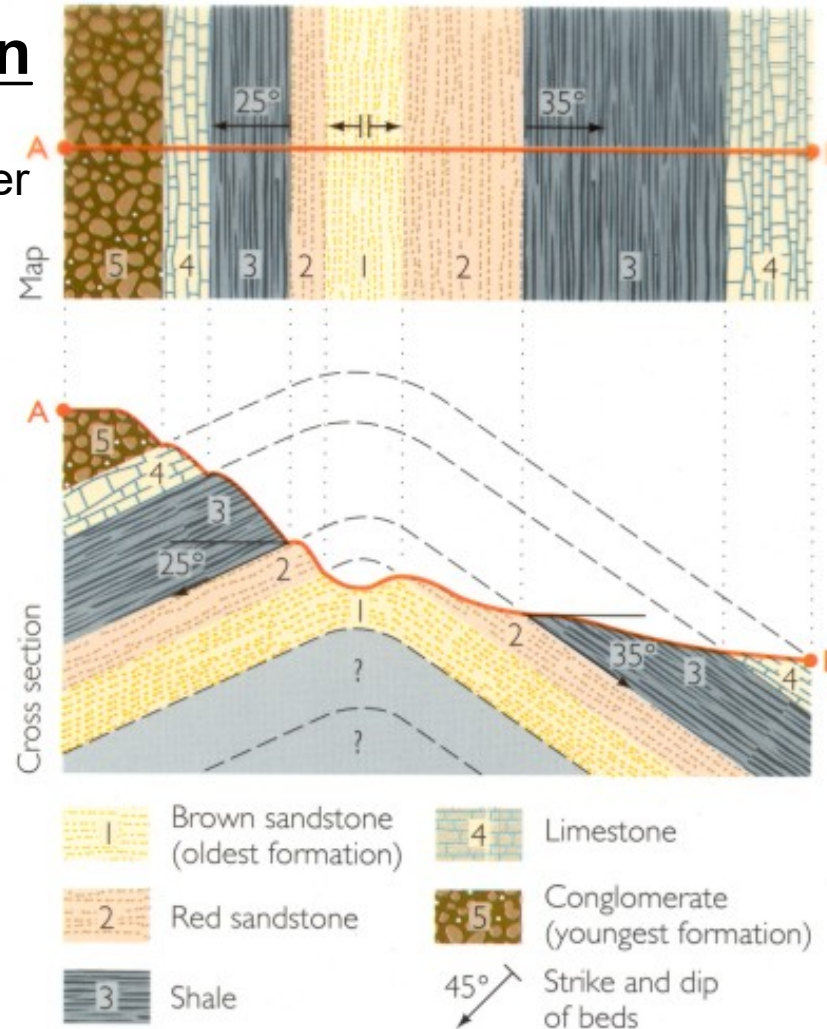


Figure 10.6
Press and Siever: *Understanding Earth*

OHT 50
Copyright © 1994 W.H. Freeman and Company

