

Bellringer: **REVIEW**

- What's the difference between strike and dip of a geologic structure?

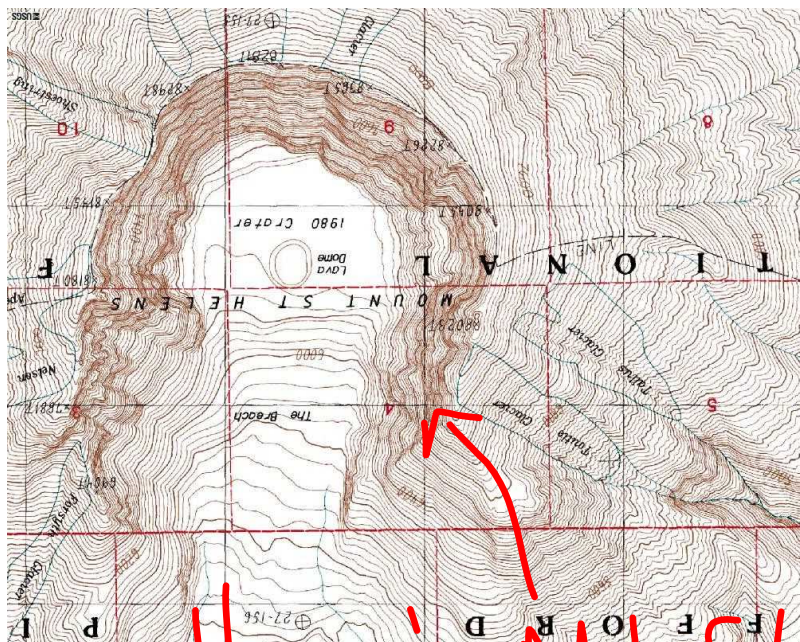
Learning Objectives:

- I can identify landmarks and change of elevation.

Check For Understanding

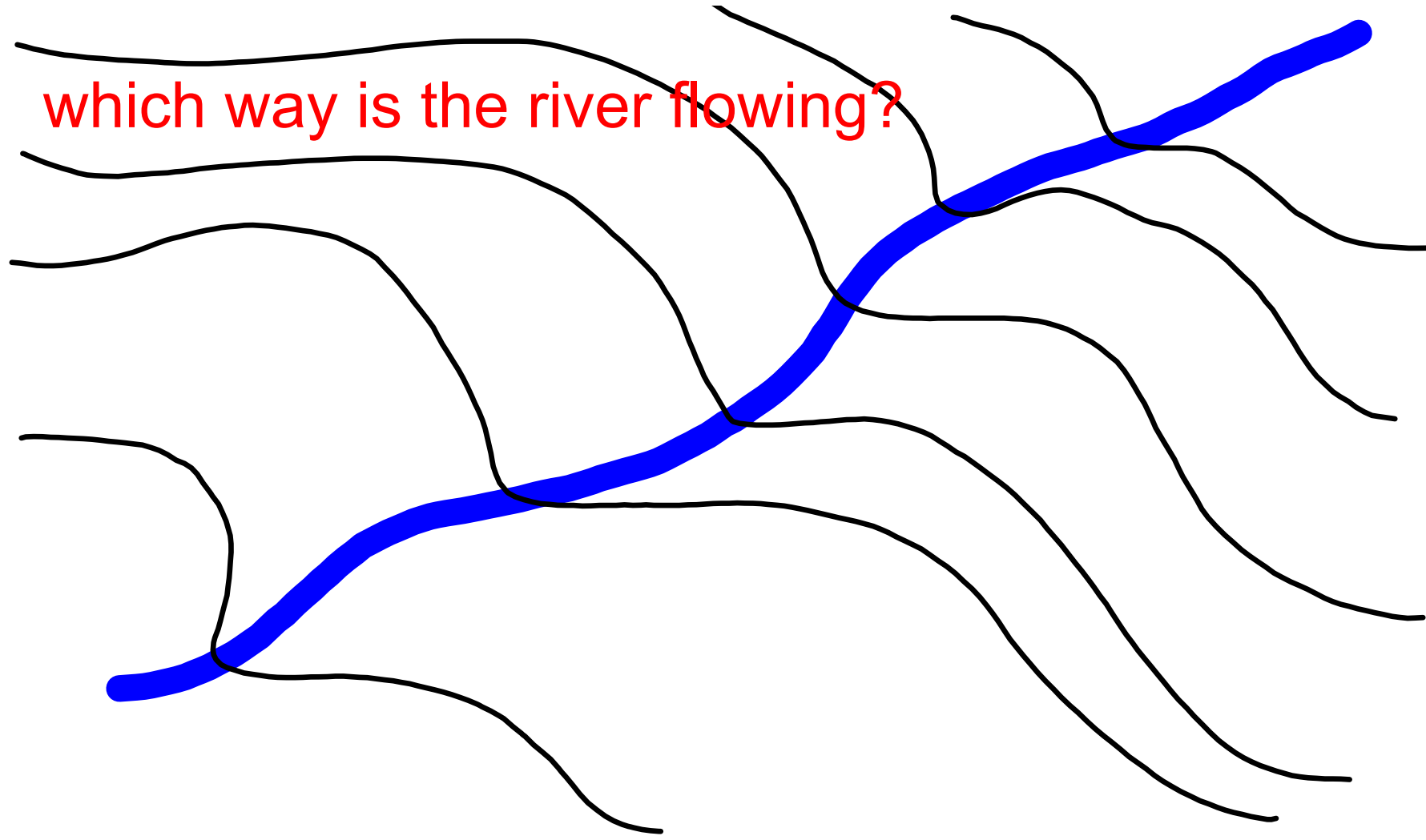
- What are contour lines on a map and what do they tell us?
- On a topographic map, when contour lines hit a river they "V" up or down stream?

Contour Lines



Here's Mt. St. Helens

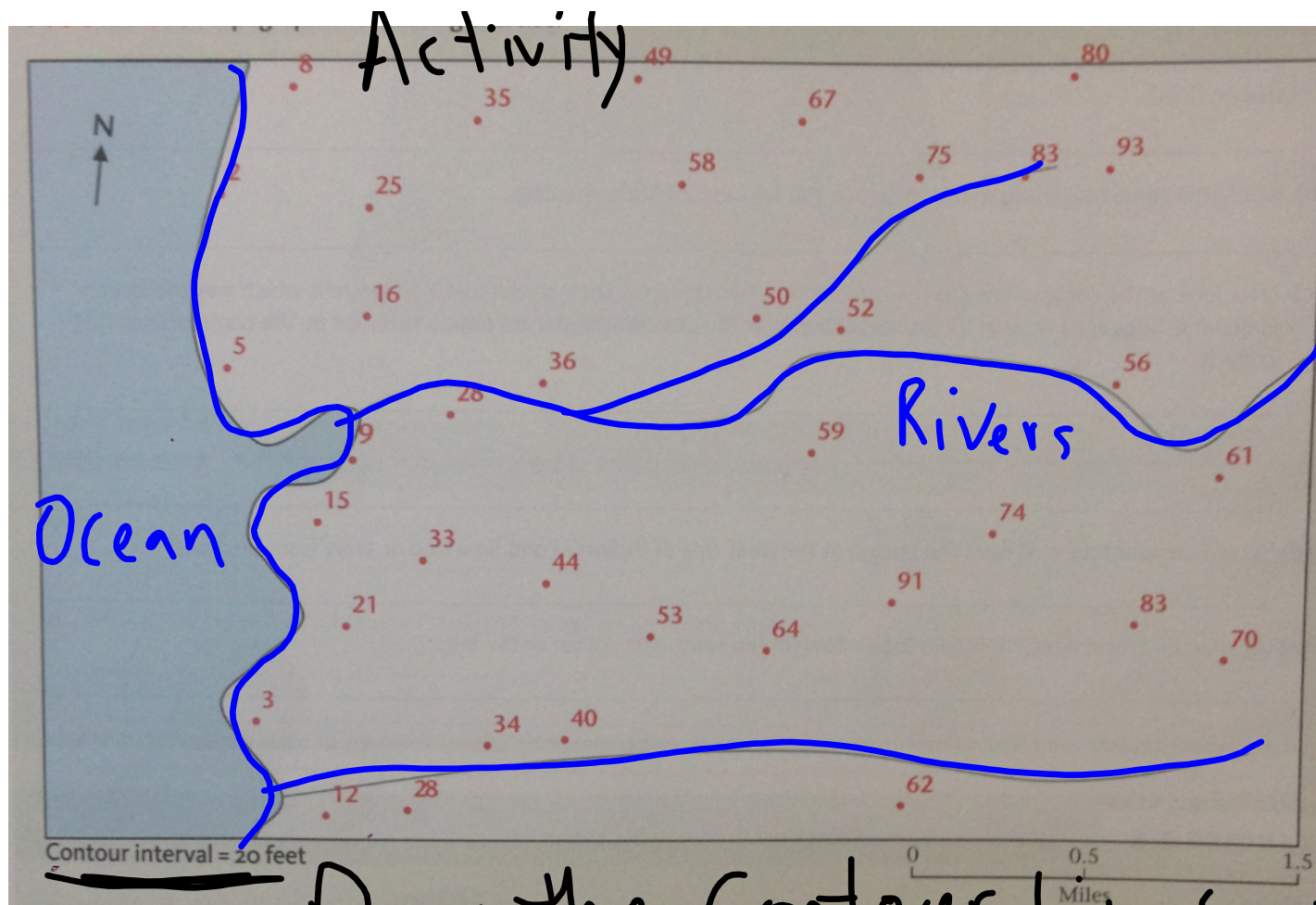




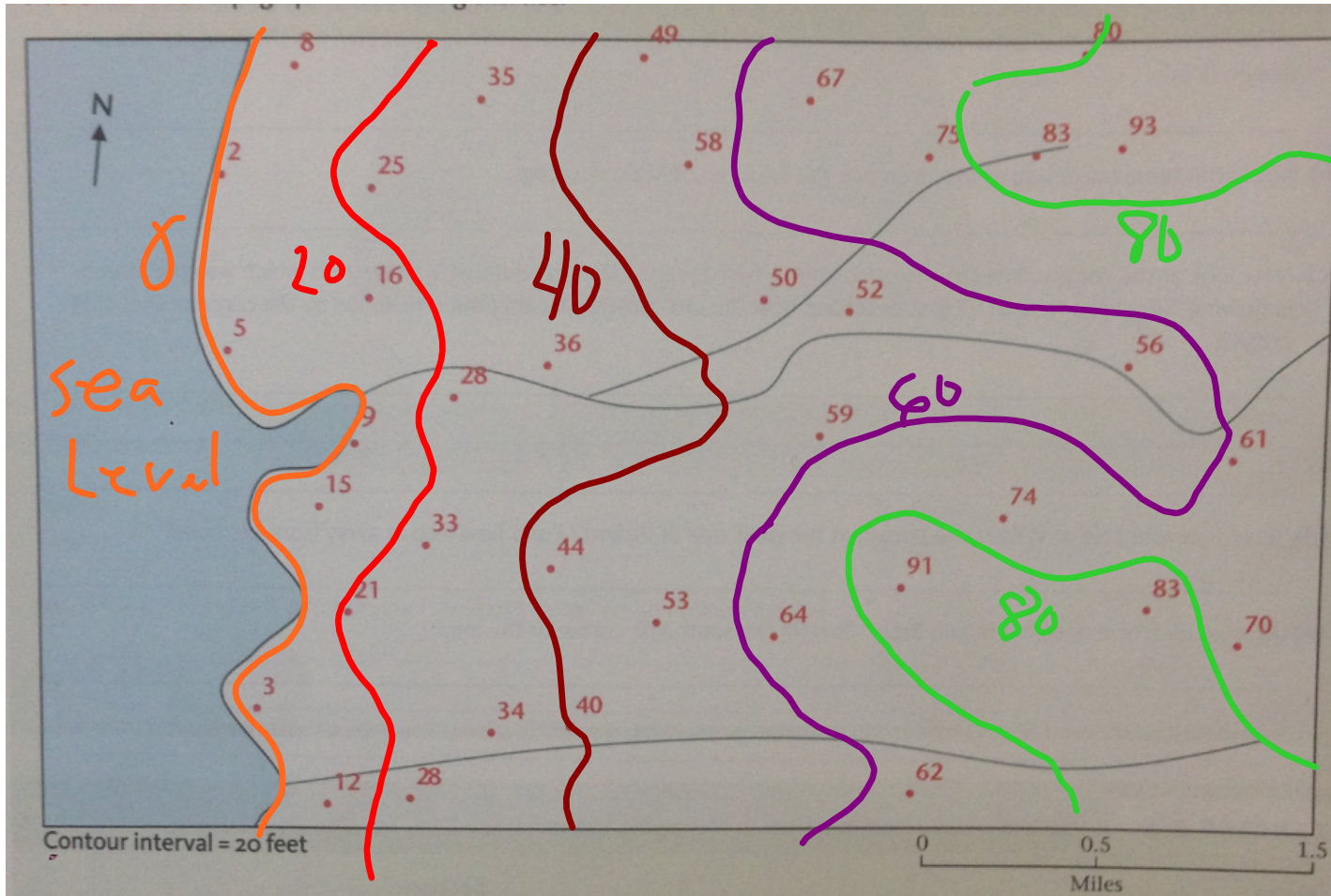
This relationship between contour lines and stream valleys is referred to as the RULE of V's. Because a V will always point upstream, the orientation of V's can always be used to determine the direction of the slope of the surface as well as the direction of the flow of the water.



Rule of
V's!
Point
Upstream



20ft.
Draw the Contour Lines every



Should look similar to this

Check For Understanding

- What are contour lines on a map and what do they tell us?
- On a topographic map, when contour lines hit a river they "V" up or down stream?

Learning Objectives: Accomplished?

- I can identify landmarks and change of elevation.

Self Evaluation:

- Understanding: 1 = Lost, 2 = Got it, 3 = I can teach it.
- Participation: 1 = Did nothing, 2 = Minimum, 3 = Fully involved