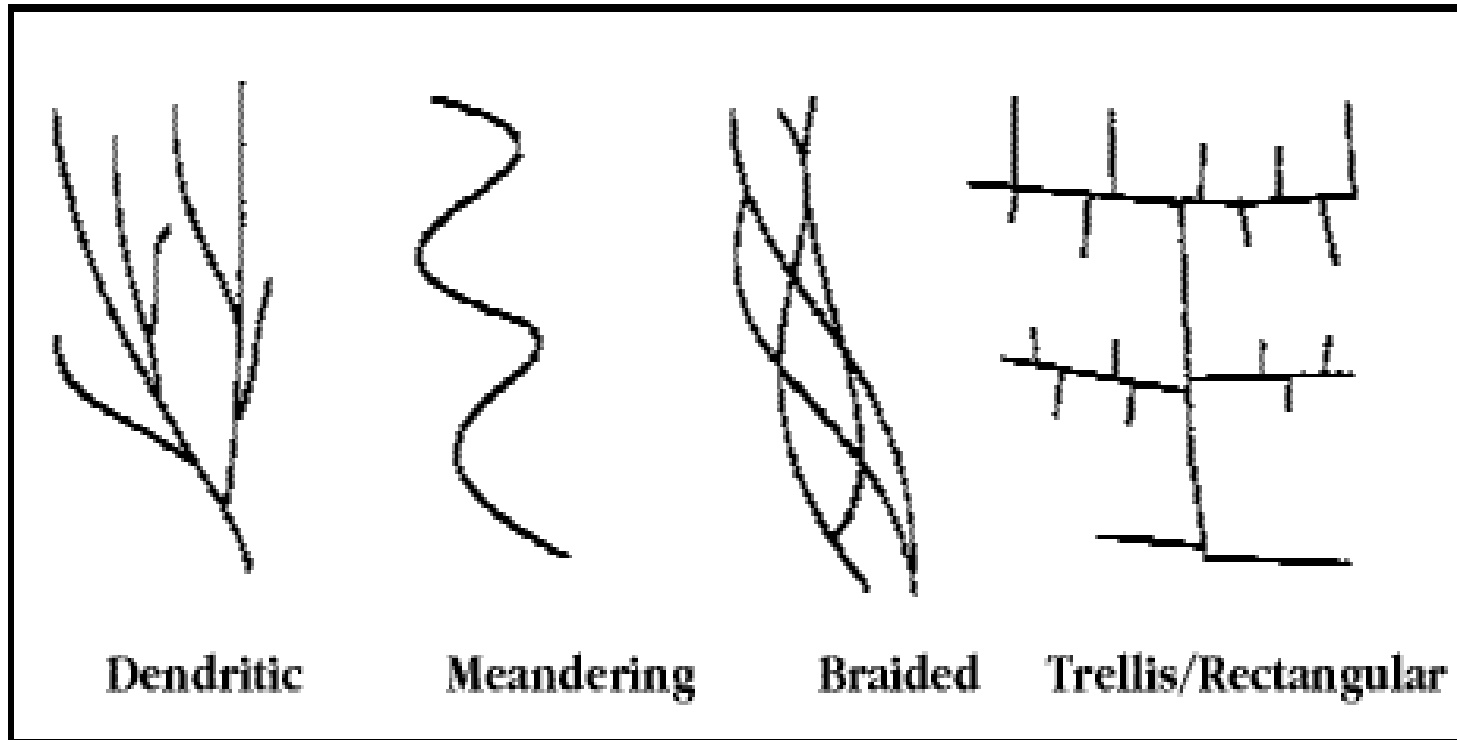


## Learning Objectives:

- I can identify and interpret river flows and directions.

## Bellringer **Review**:

## Check for Understanding Questions:

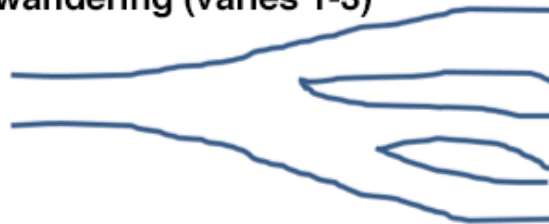


### Number of channels

single



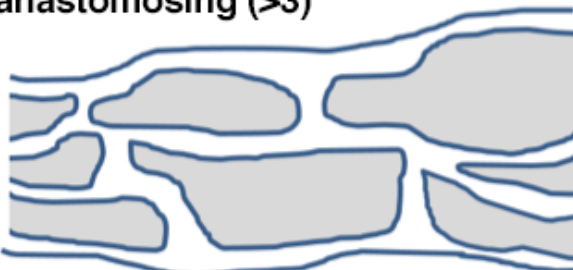
wandering (varies 1-3)



braided (>3)



anastomosing (>3)



discontinuous



### Degree of Sinuosity

straight (1 to 1.05)



low sinuosity (1.06 to 1.3)



sinuous (1.3 to 3)



### Type of Sinuosity

regular

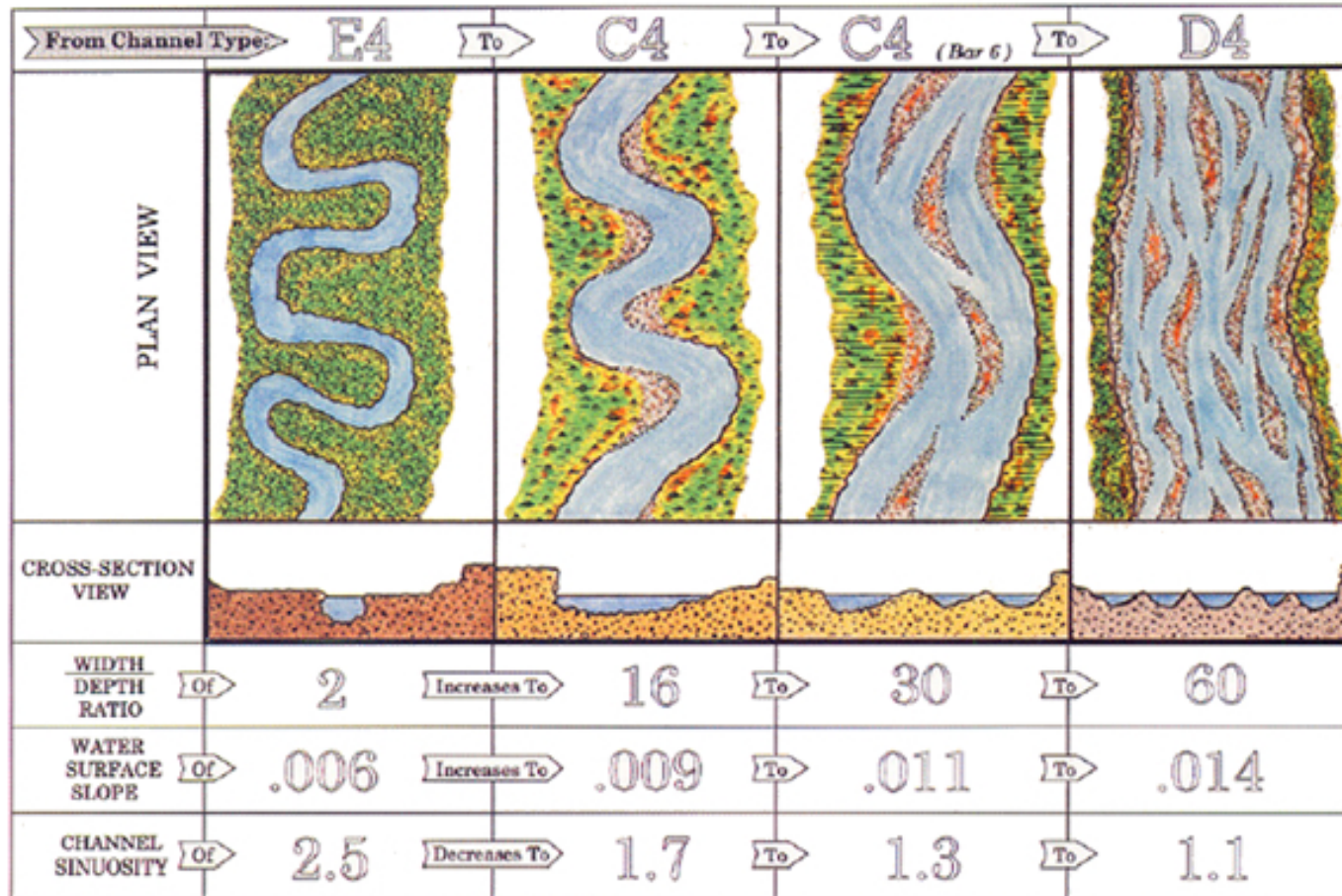


irregular

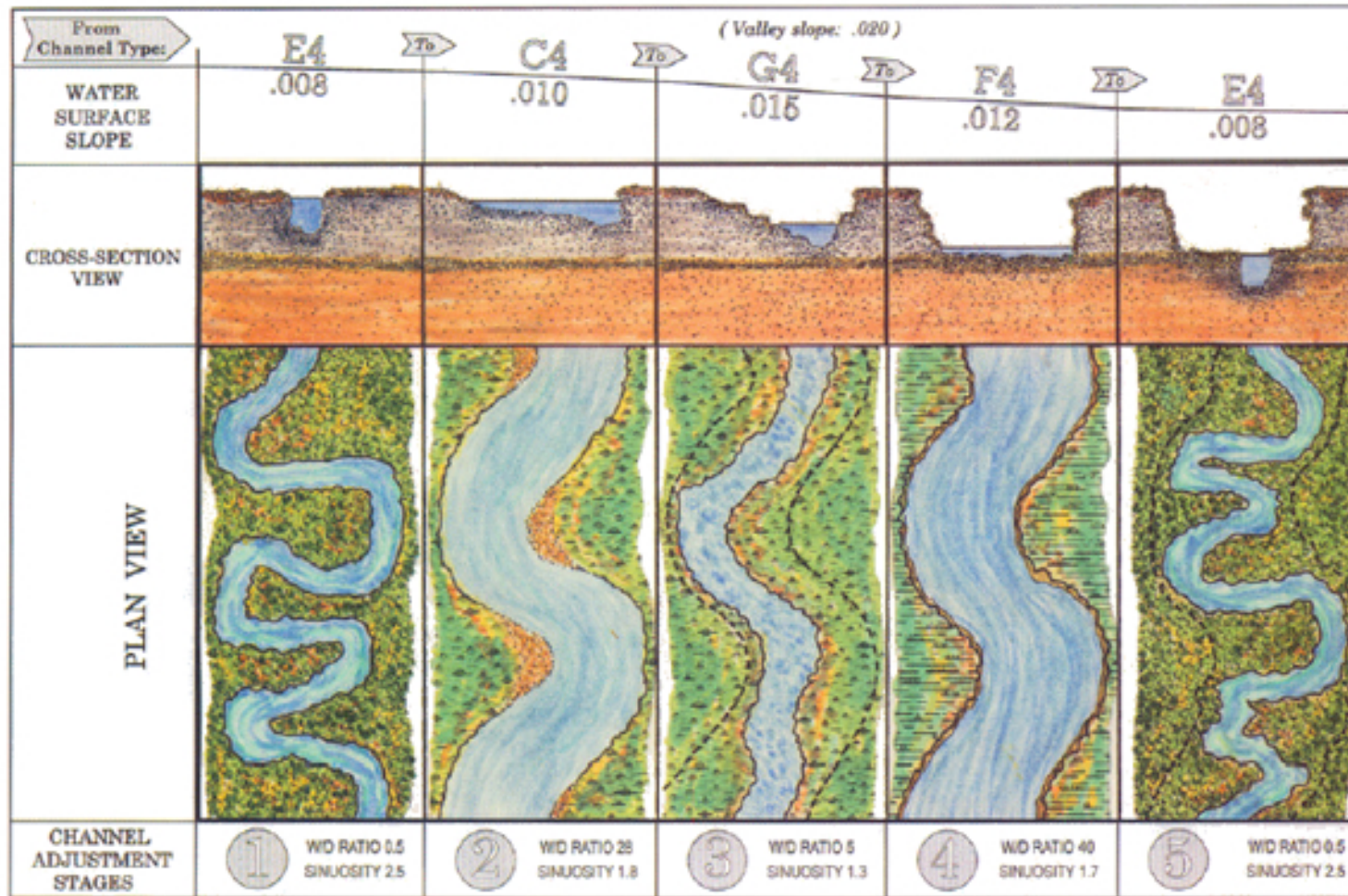


tortuous



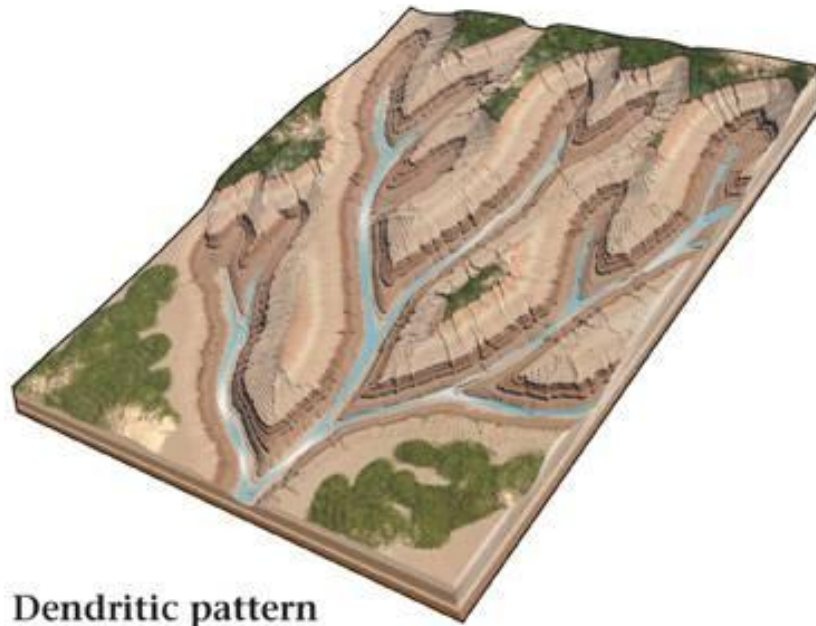


Example of Progressive stages of channel adjustment due to an imposed change in stream bank Stability (Rosgen 1996)

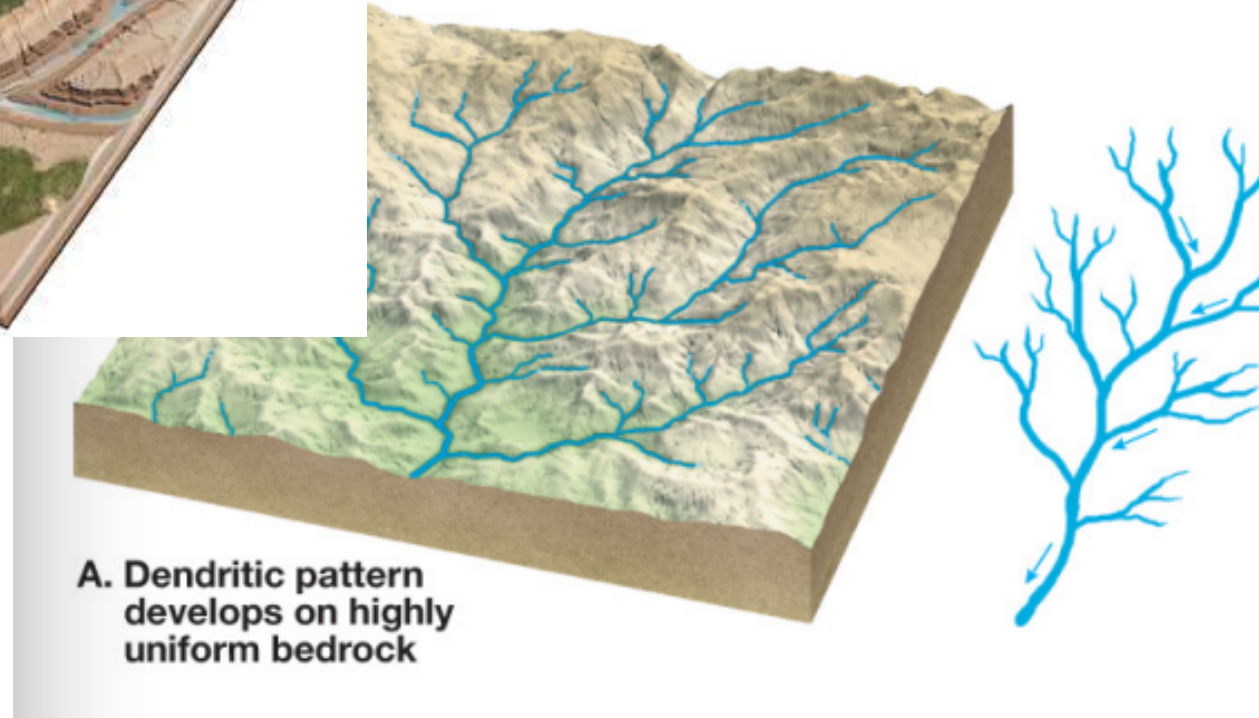


Adjustment of stream types in five progressive stages  
(Rosgen 1996)

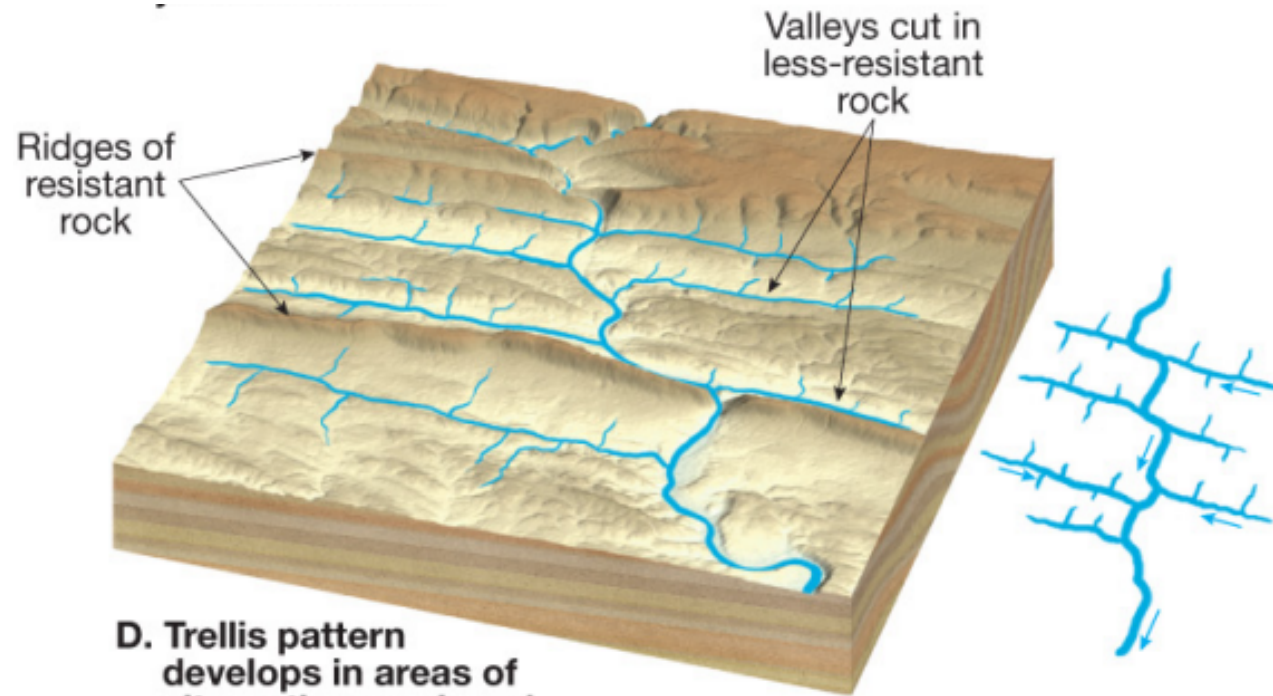




Dendritic pattern

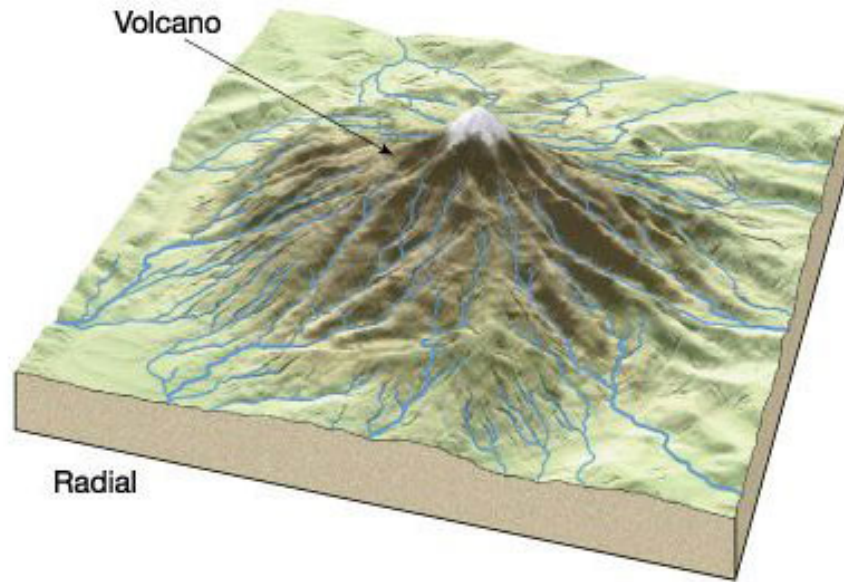


A. Dendritic pattern develops on highly uniform bedrock

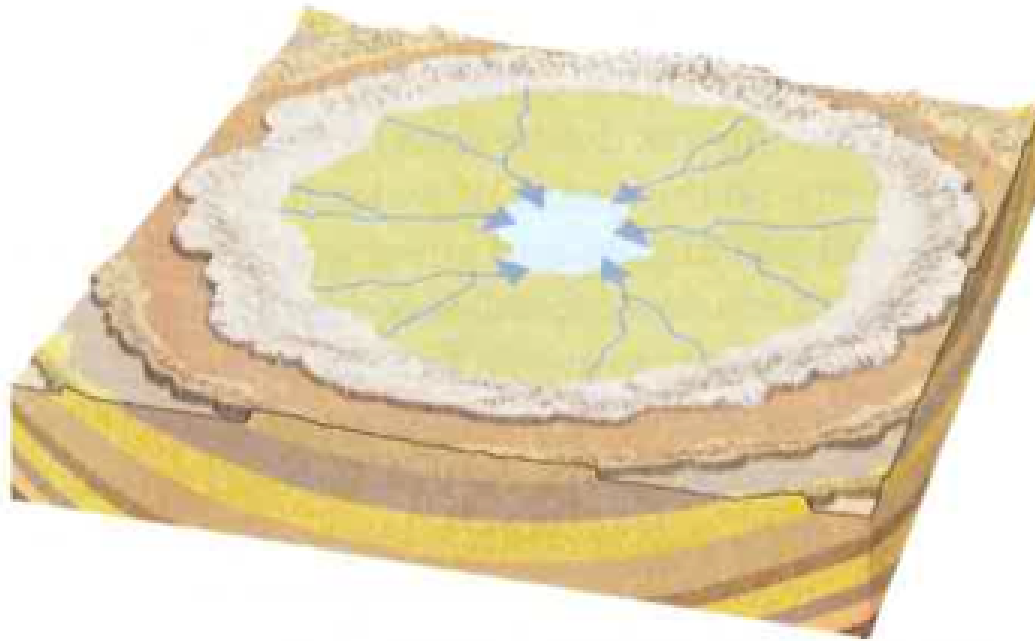


**D. Trellis pattern develops in areas of alternating weak and resistant bedrock**

# Radial: Centrifugal







**Centripetal:** Channels converge on the lowest point in a closed basin from which water cannot drain.

# Check for Understanding Questions:

## Learning Objectives: Did you accomplish them?

- I can identify and interpret river flows and directions.

## Self-Evaluation

- How well did you understand the material today?  
(1-Lost, 2- understand, 3-can teach it)
- How well did you and your team members participate in class?  
(1-didn't do anything, 2-Bare minimum, 3-fully participated)